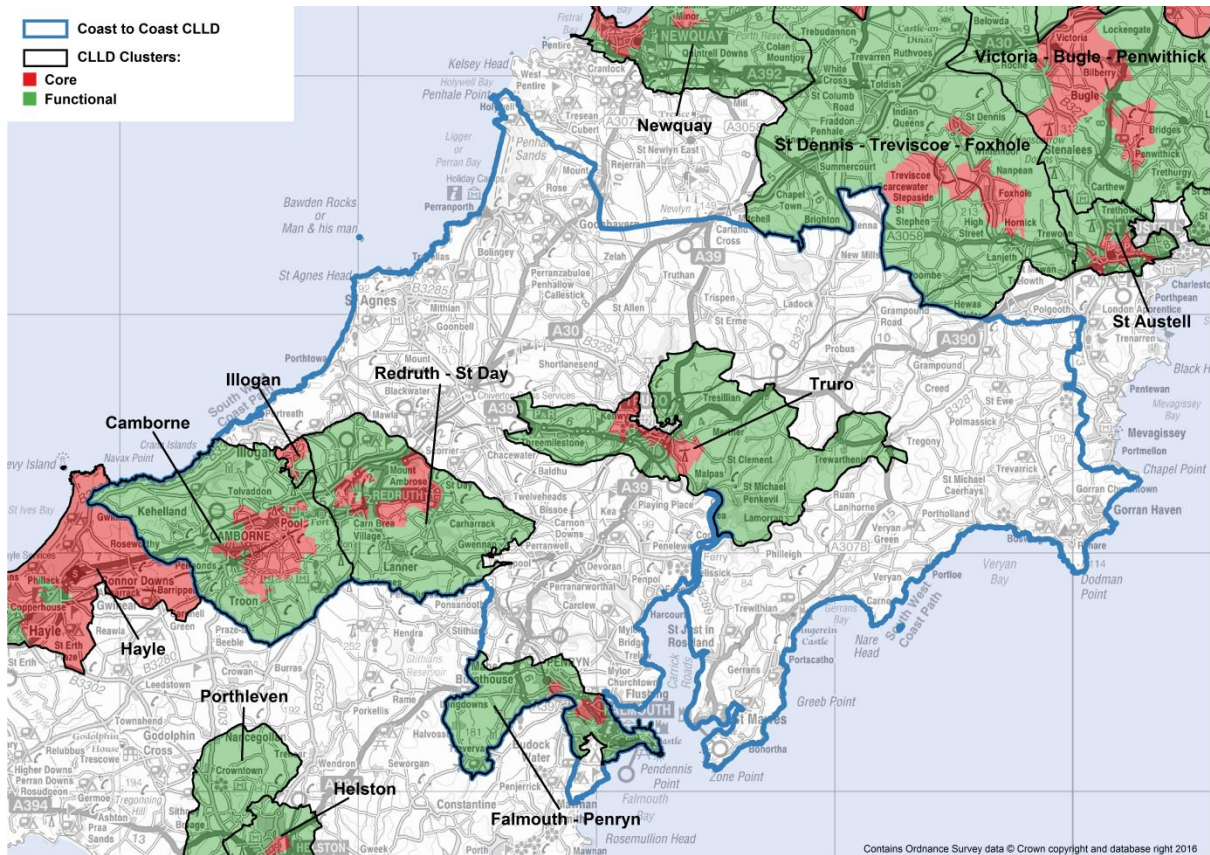


CLLD PRE-APPLICATION GUIDANCE – COAST TO COAST LOCAL ACTION GROUP

Where exactly can projects get funding?

CLLD prioritises those areas of Cornwall identified as being within the 30% most deprived by reference to the 2010 Index of Multiple Deprivation (IMD). The areas are defined as Core 'Lower Super Output Areas' (LSOAs). The map below identifies the overall locations of these Core LSOAs as the red areas – the most deprived areas in Cornwall. Projects can be located in the 'Functional' LSOAs (the green areas on the map below) as long as the benefits accrue to the Core LSOAs.





European Union

European Structural
and Investment Funds

What projects can CLLD support?

CLLD funded activity includes support for skills development, initiatives to tackle personal financial management, self-esteem, preparation to move towards work, access to employment, training, sector development, IT solutions, new transport ideas, support for social enterprise, local business growth and innovative economic development activity tailored to the local area and each target community's needs.

CLLD seeks to encourage new ideas: new techniques, new technologies, new knowledge, new approaches - as well as applying existing ideas in new areas. The programme sets out to address the big issues in specific areas in relation to employment, skills and work using a fresh approach.

For example:

- Creating more jobs locally;
- Helping businesses stay viable;
- Helping businesses to grow;
- Helping people to start a business;
- Supporting people to get the skills they need to access jobs;
- Helping build confidence to get into training;
- Opportunities for young people to find training and work locally;
- Helping develop skills, qualifications and careers once employed.

How do I know if my project idea is eligible for CLLD?

There are eligibility criteria that must be passed before a project can be submitted to the local LAG for consideration. These are:

1. The project must benefit people or businesses based in one or more of the 30% most deprived areas (the Core areas) in Cornwall either because it is located in one of these Core LSOA areas or because it is located in an adjacent or nearby Functional LSOA area *and directly benefits* one or more deprived Core areas. Projects can cover more than one LAG area, e.g. a service operating in several areas of Cornwall.
2. To find out whether your project is located in a Core or Functional area visit www.magic.gov.uk and follow the instructions below:
 1. Click on 'Get Started'
 2. Agree the terms of use
 3. In the Table of Contents on the left, expand 'Administrative Geographies'
 4. Then expand 'Other Administrative Boundaries'
 5. Select the box for 'Lower Super Output Areas with Rural Def 2011'





European Union

European Structural
and Investment Funds

6. Enter your postcode or grid reference in the search box at the top of the page and click on magnifying glass
7. Click the 'i' (for information) from the feature tools at the top of the page
8. Click on highlighted blue area
9. A message confirming the relevant LSOA area will pop up

The LSOA code or name should be cross referenced to the list of LSOAs below:

Core and Functional LSOAs by ONS name and number

Core IMD LSOAs	Adjacent Functional LSOAs	Nearby Functional LSOAs
052C E01018867	051A E01018894	066C E01018899
052A E01018865	051B E01018895	063B E01018804
052D E01018868	055C E01018871	063A E01018803
055A E01018869	052B E01018866	063D E01018806
051D E01018897	051C E01018896	064A E01018811
053E E01018878	053D E01018877	063C E01018805
053B E01018875	053C E01018876	064D E01018814
055E E01018873	053A E01018874	050A E01018916
055B E01018870	045C E01018891	042B E01018824
051E E01018898	055D E01018872	043A E01018819
062E E01018860	060D E01018837	043B E01018822
060C E01018836	060A E01018834	
062A E01018838	060B E01018835	
062D E01018841	064E E01018859	
045E E01018893	062C E01018840	
046C E01018910	062B E01018839	
049B E01018913	045A E01018889	
050C E01018918	045B E01018890	
046D E01018911	049D E01018915	
044C E01018809	049C E01018914	
042D E01018854	046A E01018908	
043E E01018857	046B E01018909	
	049A E01018912	
	050B E01018917	
	056C E01018829	
	050D E01018919	
	042C E01018853	
	043C E01018855	
	044B E01018808	
	043D E01018856	
	044D E01018810	
	048B E01018846	
	044A E01018807	





European Union

European Structural and Investment Funds

- The project must provide novel or 'innovative' economic development support to the local community or business(es) in the target area; it cannot directly duplicate existing schemes, e.g. mainstream ERDF programmes nor can mainstream European funding, i.e. ERDF and ESF be mixed or combined with CLLD funding *within the same project*. It may, in some circumstances, be possible to fund adjacent projects or fund activity (e.g. ESF funded skills development) that is located in a mainstream funded project (e.g. an ERDF funded capital build development) as long as they are not technically the same project claiming the same outputs;

The project must support the ambitions of the area's CLLD Local Development Strategy (LDS) and deliver activity that supports one or more of the Strategy's Objectives – these are set out in the LDS; if the project covers more than one LDS area it must support objectives from each area involved.

For Coast to Coast the Objectives are:

- Supporting business and employment development at the community level to generate locally available employment opportunities
- Exploiting the cultural and heritage assets of the area (an objective in its own right and underpinning Objectives 1 and 3)
- Making work and training and skills development opportunities accessible to all CLLD residents

The project must deliver one or more of the CLLD Programme Outputs (and/or for ESF, Programme Results) and represent good value for money. The Outputs are:

CORNWALL CLLD	ESF Outputs and Results
Outputs	
Number of participants	
Participants that are unemployed including long-term unemployed	
Participants that are inactive	
Participants that are aged over 50	
Participants that are from ethnic minorities	
Participants that have disabilities	





European Union

European Structural
and Investment Funds

Results	
Participants in education or training on leaving	
Unemployed participants in employment, including self-employment on leaving	
Inactive participants into employment or job search on leaving	
CORNWALL CLLD	ERDF Outputs
Outputs	
Number of enterprises receiving support	
Number of new enterprises receiving support	
Employment increase in supported enterprises	
Number of potential entrepreneurs assisted to be enterprise ready	
Square metres public or commercial building built or renovated in target areas	

The project must be delivered during the CLLD activity delivery timeframe; ie. before September 2022.

Application Process

There are different routes for projects seeking grants between £1,000 and £10,000, and above £10,000 CLLD grant intervention. A small grants application form will be available for grants up to £10,000. Small grants are for ERDF expenditure only. Each LAG group will have their own small grants panel, made up of the Executive Group membership. The small grants panel will assess all small grant applications and will make their recommendations to the full Executive Group.

Where grants are sought over £10,000, the completion of an Expression of Interest (EOI) will be required. The EOI requests information describing in outline, the project idea, where it will be focussed, what it will achieve, what the outputs will be, who will benefit, how much it is likely to cost, etc.

The project EOI will then be assessed by the CLLD Team before being put before the Executive Group for a decision. If the project passes the EOI stage successfully, then the project applicant will be invited to complete a 'Full Application', a more detailed description of the project. This Full Application will then be assessed. Assessment will be in the form of an Eligibility and Completeness check followed by a technical appraisal. Once this has been completed, a strategic appraisal will be carried out by the CLLD Executive Group





European Union

European Structural
and Investment Funds

to test the project's strategic fit with the LDS and the value for money it represents to the programme. All grants above £10,000 will go to the CLLD Executive Group for decision. If the project is approved, CDC as the Accountable Body will issue a funding 'Offer Letter' to the project applicant.

Further information

West Cornwall and Coast to Coast Local Action Group areas:

josyanne.clarke@cornwalldevelopmentcompany.co.uk

01872 326047

CLLD Facilitator, Coast to Coast area:

naomi.belert@cornwalldevelopmentcompany.co.uk

01872 322329

